

dom 6-910

Studio Meda, 2017

Sitz Formsperrholz, geschlossener Rücken, Rückenteil
und Hinterfüsse massiv gebogen, stapelbar
B52, T55, H80, SH46

Studio Meda, 2017

Assise en multiplis, dossier fermé, partie arrière et pieds
arrière massifs incurvés, empilable
L52, P55, H80, HAss46

Studio Meda, 2017

Seat moulded plywood, closed back, back section and
rear feet solid bendwood, stackable
W52, D55, H80, SH46

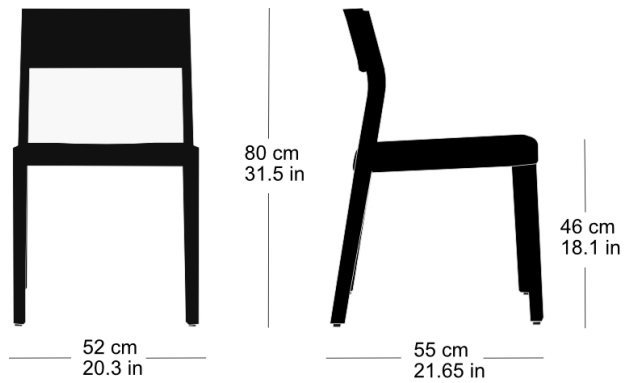
Varianten / variantes / variants

dom
6-900dom
6-900vdom
6-900adom
6-906dom
6-906vdom
6-906adom
6-910vdom
6-910adom
6-916dom
6-916vdom
6-916adom
17-900dom
17-910dom
6-815dom
6-825dom
11-900dom
11-906dom
11-900rdom
11-906r

dom 6-910

Technische Angaben / specifications / specifications

Masse / mesure / measure



Gewicht / ponds / weight 5 kg 10.0 lb

Reihenverbindung /
accouplement / mating system ja / oui / yes

Stapelung / empilage / stacking 5 Stühle / chaises / chairs

dom 6-910

Holzarten / types de bois / types of wood



Beech natural BN 000 AM
Buche natur BN 000 AM
Hêtre naturel BN 000 AM



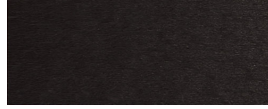
Beech anthracite BB 200 SG
Buche anthrazit BB 200 SG
Hêtre anthracite BB 200 SG



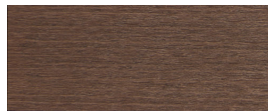
Beech black BB 203 SG
Buche schwarz BB 203 SG
Hêtre noir BB 203 SG



Oak natural EN 000 AM
Eiche natur EN 000 AM
Chêne naturel EN 000 AM



Beech ebony BB 100 SG
Buche Ebony BB 100 SG
Hêtre teinté ebony BB 100 SG



Beech walnut BB 151 SG
Buche Nuss BB 151 SG
Hêtre teinté noyer BB 151 SG



Beech whitewashed BG 172 SG
Buche geweisst BG 172 SG
Hêtre teinté blanc BG 172 SG

Belag / revêtement / surface